

ROYALTOOL

Dual lens and 360° Rotating Borehole Inspection Camera System D10014PT

Application: Deep well/Borehole/Oil Well//



Feature:

- * Φ 73MM Dual Lens Side lens: 360°rotation 1080*720 resolution, side lens:manual focus
- * Each lens integrated led lights and brightness adjustable
- *Waterproof: 20MPa,water depth: 2000M Max
- *Camera head anti electromagnetic interference
- *Design based on the micro servo drive / Very low noise
- * Twist wires cable with motorized winch
- * HD DVR control box with Audio/video recording function
- *Cable Heat-resistant: 75°C
- *Cable tensile strength: 280KG

*Patent Pending Design *

ROYAL TOOL(HONGKONG)LIMITED
531, Building A, Jiada R&D Building, No. 5
Songpingshan Road, Songpingshan
Community, Xili Street, Nanshan District,
Shenzhen. 518000
E-mail:info@royaltoolpro.com
Tel:086 0735 7640815
Phone:086 18565801348
www.royaltoolpro.com
www.vanhonindustry.com

Detail Parts Spec:

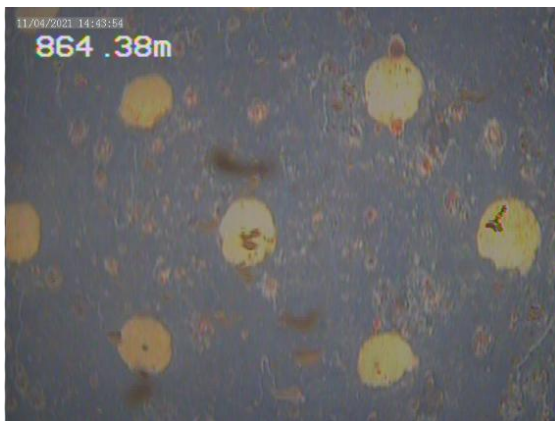
Camera Head	
Diameter	Φ73MM
Waterproof	20MPa, water depth: 2000M Max
Heat-resistant	75℃
Led Lights	Side lens:Built-in 24 pcs Led Lights. Dimness.1920 Lumen Down lens: 8 pcs led lights.Dimness. 1280 Lumen
Sensor	Sony CCD sensor
High Resolution Lens	Cone Window 2.8 Lens/F2.0
Resolution	1080*720
Led Lights	Higher Bright Led Lights Side: 4PCS Bottom:6PCS
Focus	Side lens with manual focus
View of Angle	90°
Signal to Noise Ratio	52dB(Min) to 60dB(Max)(AGC shut down)
Sensitivity	0.1 Lux at F1.2 5600° K
Pan Movement	Support Single Step and Multi-Step
Tilt Movement	Support Single Step and Multi-Step
Cable and motorized cable wheel	
Cable Diameter	8MM
Cable length	1000M, 1500M
Tensile Strenght	280KG
Logging Cable	6 Cores
Digital Meter-counter	Accurate 0.05M
Centralizer	High Elastic Stainless Steel Centralizer
Heat-resistance	70℃
Downhole Pulley	
Pulse	400
Digital meter-counter function	Work together with the suitcase
Meter-counter accuracy	0.05M./ Automatic calibration
Suitcase/HD DVR	
Power Supply	12V-220V
Dimension	415*340*144MM
Depth Jack	Yes
Video in /out Jack	Yes
Video/audio/text recording	Yes
Keyboard	Yes

Storage	USB
Monitor	
Size	12 inch
Power Supply	DC12V
Wooden case packing	
Wood case dimension	117cm*94cm*80cm
Gross weight	234KG

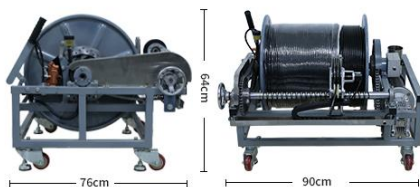
Main Parameter



Screen size: 12" Material: ABS
 Weight: 6 KG Signal quality: CCD Sony Camera 750TV Line



Main Parameter



Weight: 150 KG (1000m)
 Cable length: 1000m - 5000m

***Patent Pending Design ***

ROYAL TOOL(HONGKONG)LIMITED
 531, Building A, Jiada R&D Building, No. 5
 Songpingshan Road, Songpingshan
 Community, Xili Street, Nanshan District,
 Shenzhen. 518000
 E-mail: info@royaltoolpro.com
 Tel: 086 0735 7640815
 Phone: 086 18565801348
 www.royaltoolpro.com
 www.vanhonindustry.com